

STARMAX



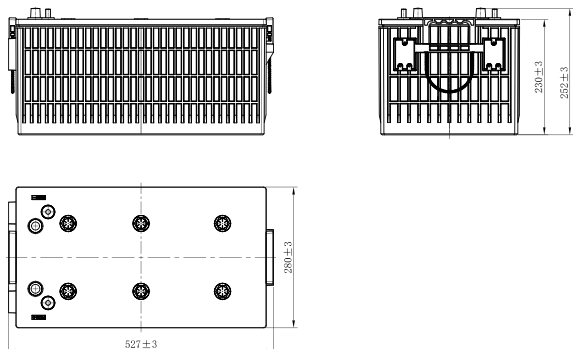
MR MARINE AND RV
AGM TECHNOLOGY
BATTERIES
LONG LASTING . DURABLE . RELIABLE



www.starmaxbatteries.com

STM 12 - 245M AGM

Dimensions (mm)



General Features

- Superior starting & cycling performance
- Spill-proof, maintenance free AGM technology
- 3x higher cycle life compared to conventional starter batteries
- 2x Faster Charge Acceptance compared to conventional strater batteries
- High Strength Absorbed Glass Mat (AGM) Seperator built to withstand vibration
- Leak proof, double sealed lid for tilt protection
- UL recognized, IEC60896-21 & 22 certified and IATA approved for air freight

Electrical Specifications

Rated Capacity	20 hour rate(12.25A)	245Ah
Reserve Capacity		540min
Cold Cranking Performance Amps@0°F(-18°C)		980A



Physical Specifications (mm)

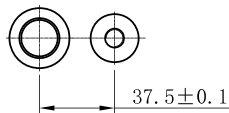
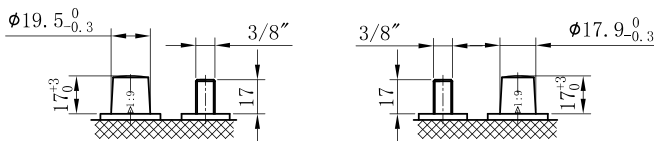
Nominal Voltage	12V	
Nominal Capacity(20HR)	245Ah	
Dimension	Length	527±3mm(20.75inches)
	Width	280±3mm(11.02inches)
	Container Height	230±3mm(9.06inches)
	Total Height (with Terminal)	252±3mm(9.92inches)
Weight	Approx 67.5Kg(148.84lbs)	
Standard Terminal	12	
Cell layout	4	
Hold-Down	B0	
Cell plate qty	/	
Case	Black-PP Material	
Cover	Black-PP Material	
Handle	Black-PP Material	

Standard Terminal (mm)

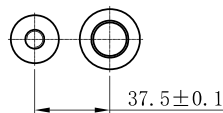
Cell Layout

Terminal
Type

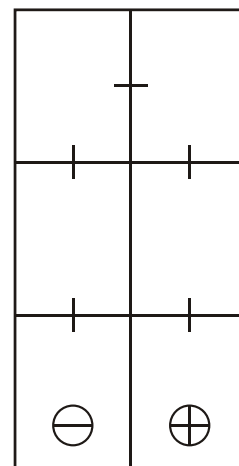
12



Pos



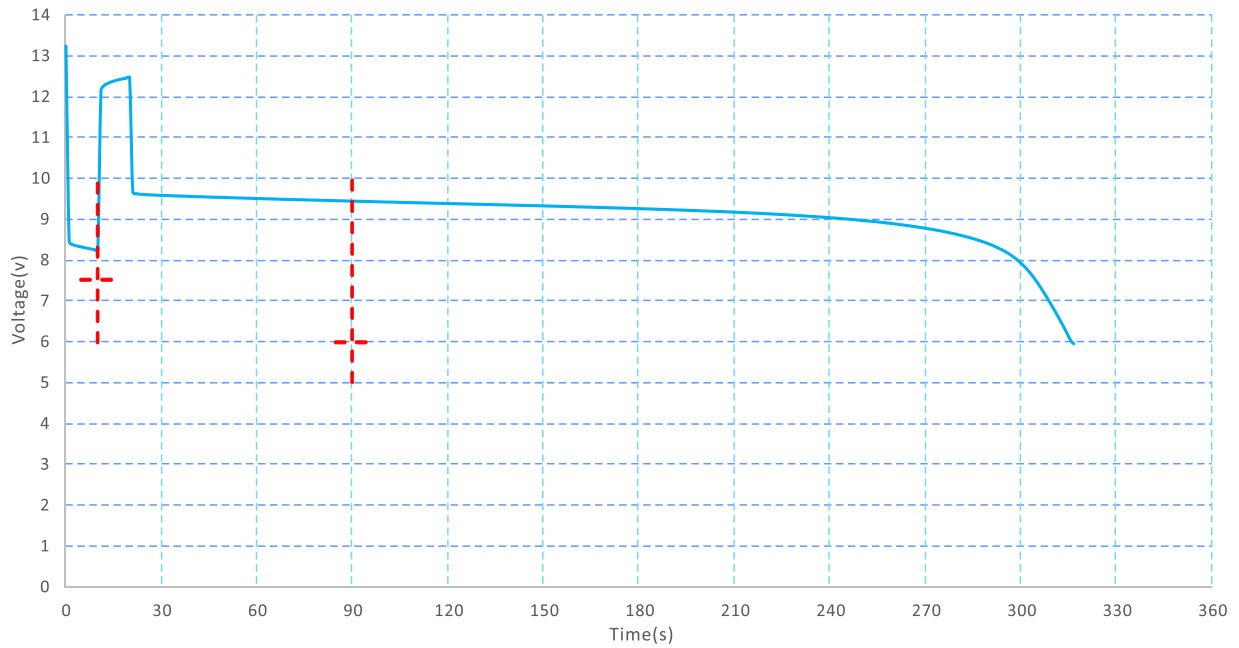
Neg



Figure(4)

Discharge Characteristics(-18°C,0°F)

STM12-245M
(CCA-EN)Capacity Test(@-18)with I=980A
Spec $U_{10s} \geq 7.5V$ $t_6v \geq 90s$



*Values are subject to variation of +/- 5% in normal manufacturing processes.

*Technical specifications and the product line above could be changed without prior notice.



Starmax Corporation

1585 Cliveden Avenue, Delta, British Columbia
V3M 6M1, Canada

Phone: +1 888 669 1310

Email: info@starmaxbatteries.com

Website: www.starmaxbatteries.com

