



GENERAL PURPOSE **BATTERIES**

ST12-15 (12V 15Ah)

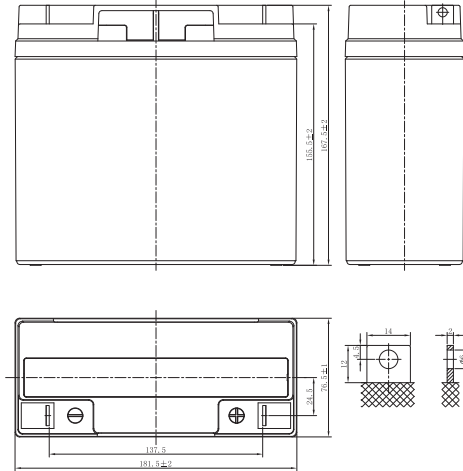


ST SERIES - GENERAL PURPOSE

ST12-15



LAYOUT



General Features

- ✓ 5 years design life(25°C)
- ✓ Special exhaust structure and sealing technology, safe and reliable, flexible installation, convenient maintenance
- ✓ PbCaSn alloy for plate grids: less gassing, less self-discharging
- ✓ High quality AGM separator: extend cycle life and prevent micro short circuit
- ✓ High purity raw material: ensure low self discharge rate

Applications

- ✓ All purpose
- ✓ Uninterruptable Power Supply (UPS)
- ✓ Electric Power System (EPS)
- ✓ Emergency backup power supply
- ✓ Alarm and security system
- ✓ Communication power supply
- ✓ DC power supply
- ✓ Auto control system

Standards

- ✓ Compliance with IEC 60896 standards, EU Battery Directive
- ✓ UL, CE Certified
- ✓ Manufactured in Starmax® IATF16949, ISO45001, ISO 9001 and ISO 14001 certified production facilities



SPECIFICATIONS

Rated Voltage	12V	
Nominal Capacity	15.0Ah	(C ₂₀ ,1.75V/cell)
Dimensions	Length	181.5±2mm (7.14 inches)
	Width	76.5±1mm (3.01 inches)
	Container height	167.5±2mm (6.59 inches)
	Total height	167.5±2mm (6.59 inches)
Approx. weight	4.7 Kg (10.4 lbs)	
Terminal	T1/T2	
Container material	ABS	
Rated capacity (25°C)	15.0 Ah	(20hr,0.75A,1.75V/cell)
	14.2 Ah	(10hr,1.42A,1.75V/cell)
	12.9 Ah	(5hr,2.58A,1.75V/cell)
	11.6 Ah	(3hr,3.88A,1.75V/cell)
	9.99 Ah	(1hr,9.99A,1.60V/cell)
Max. discharge current	225A (5s)	
Internal resistance (25°C)	Approx 18mΩ	
Operating temp. range	Discharge	-15~50°C (5~122°F)
	Charge	-20~40°C (-4~104°F)
	Storage	-15~40°C (5~104°F)
Nominal operating temp. range	25±3°C (77±5°F)	
Cycle Use	Initial Charging Current less than 4.5A. Voltage 14.4V~15.0V at 25°C(77°F)Temp. Coefficient -30mV/°C	
Standby Use	Initial Charging Current less than 4.5A. Voltage 13.5V~13.8V at 25°C(77°F)Temp. Coefficient -20mV/°C	
Effect of temp. to Capacity	40°C (104°F)	103%
	25°C (77°F)	100%
	0°C (32°F)	86%
Self discharge	ST series batteries may be stored for up to 6 months at 25°C(77°F) and then a freshening charge is required. For higher temperatures the time interval will be shorter.	

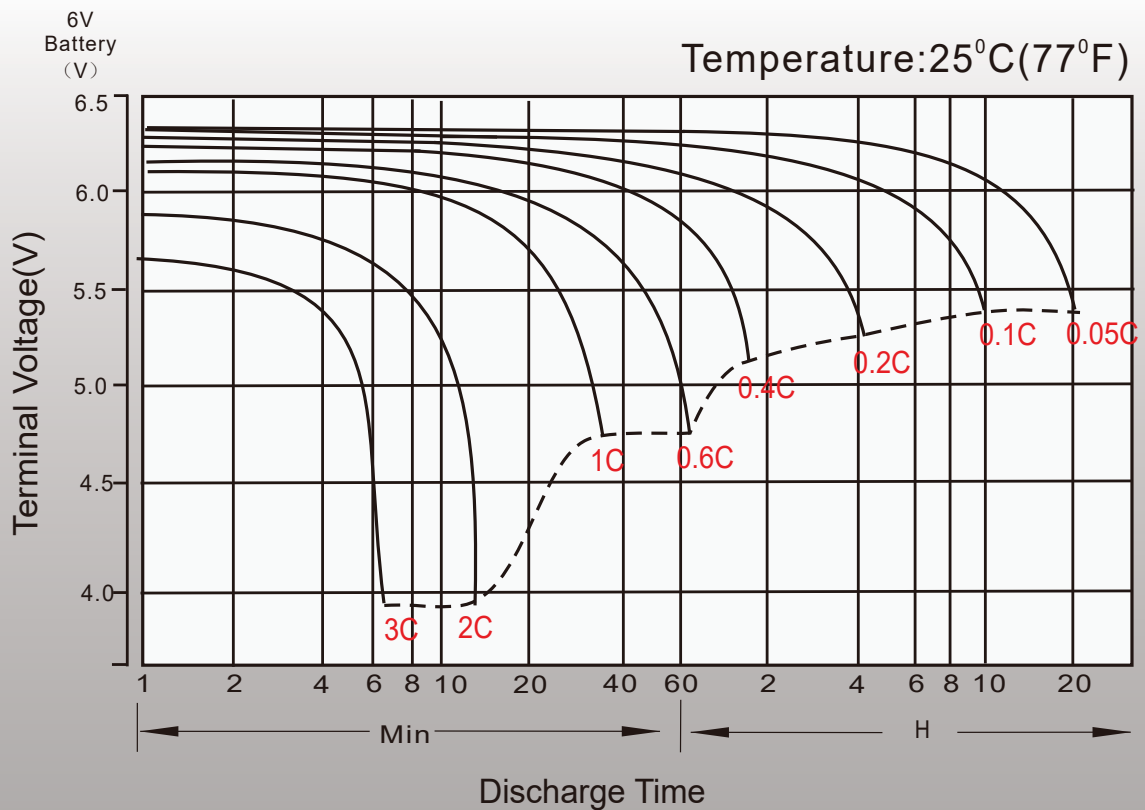
Constant Current Discharge (Amperes) at 25°C (77°F)

F.V/Time	5min	10min	15min	20min	30min	45min	1h	1.5h	2h	3h	4h	5h	6h	8h	10h	20h
1.85V/cell	47.6	32.6	25.4	20.6	15.2	11.1	9.04	6.58	5.13	3.71	2.95	2.51	2.15	1.70	1.39	0.733
1.80V/cell	51.2	34.6	26.6	21.5	15.7	11.4	9.26	6.71	5.23	3.77	3.00	2.55	2.19	1.72	1.40	0.742
1.75V/cell	53.9	36.0	27.5	22.1	16.1	11.7	9.45	6.84	5.32	3.83	3.04	2.58	2.21	1.74	1.42	0.750
1.70V/cell	56.5	37.4	28.4	22.7	16.5	11.9	9.62	6.96	5.40	3.88	3.08	2.62	2.24	1.76	1.43	0.756
1.67V/cell	58.4	38.5	29.1	23.2	16.8	12.1	9.77	7.04	5.46	3.92	3.11	2.64	2.26	1.77	1.44	0.762
1.60V/cell	62.0	40.1	30.1	23.9	17.2	12.4	9.99	7.20	5.57	3.99	3.16	2.68	2.29	1.80	1.46	0.770

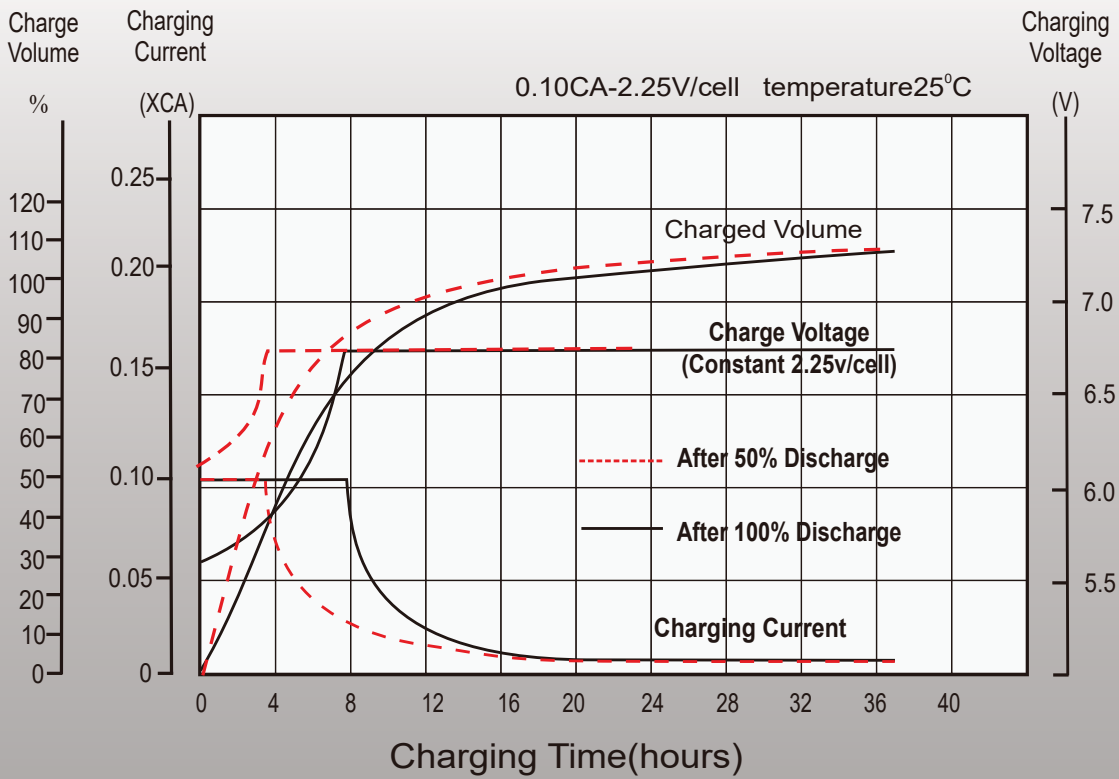
Constant Power Discharge (Watts/cell) at 25°C (77°F)

F.V/Time	5min	10min	15min	20min	30min	45min	1h	1.5h	2h	3h	4h	5h	6h	8h	10h	20h
1.85V/cell	90.0	62.1	48.6	39.8	29.4	21.6	17.6	12.8	10.1	7.28	5.82	4.96	4.26	3.36	2.75	1.47
1.80V/cell	95.9	65.4	50.7	41.1	30.2	22.1	18.0	13.1	10.2	7.39	5.89	5.03	4.32	3.41	2.79	1.48
1.75V/cell	99.9	67.5	52.1	42.1	30.8	22.4	18.3	13.3	10.4	7.49	5.96	5.08	4.36	3.44	2.81	1.50
1.70V/cell	103.6	69.7	53.5	43.0	31.4	22.9	18.5	13.5	10.5	7.58	6.03	5.15	4.41	3.47	2.84	1.51
1.67V/cell	106.3	71.3	54.6	43.8	31.9	23.2	18.8	13.6	10.6	7.65	6.08	5.18	4.44	3.50	2.86	1.52
1.60V/cell	110.6	73.4	56.1	44.9	32.6	23.6	19.1	13.8	10.8	7.77	6.18	5.25	4.50	3.54	2.89	1.54

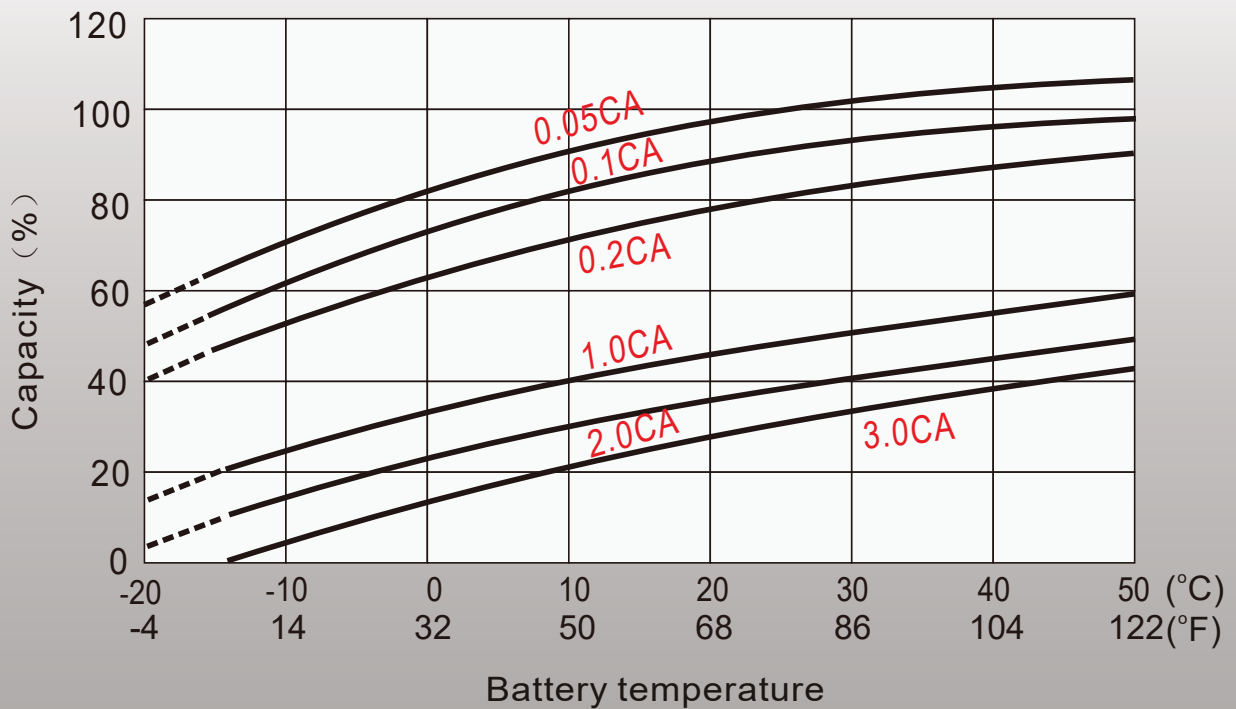
Discharge Characteristics



Float Charging Characteristics



Temperature Effects in Relation to Battery Capacity



Float Service Life



ST12-15 (12V 15Ah)



Starmax Corporation

1585 Cliveden Avenue, Delta, British Columbia
V3M 6M1, Canada

Phone: +1 888 669 1310

Email: info@starmaxbatteries.com

Website: www.starmaxbatteries.com

