

STARMAX

LITHIUM IRON BATTERIES

Model: **SL200-LI**



The world's leading battery brand



www.starmaxbatteries.com

LITHIUM IRON PHOSPHATE (LiFePO4) BATTERY

Model: **SL200-LI**

Features Of LiFePO4 Battery

Longer Cycle Life: Offers up to 20 times longer cycle life and five times longer float/calendar life than lead acid battery, helping to minimize replacement cost and reduce total cost of ownership.

Lighter Weight: About 40% of the weight of a comparable lead acid battery. A 'drop in' replacement for lead acid batteries.

Higher Power: Delivers twice power of lead acid battery, even high discharge rate, while maintaining high energy capacity.

Wider Temperature Range: -20 C~60 C.

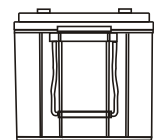
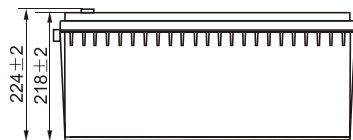
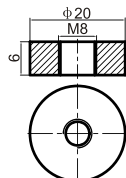
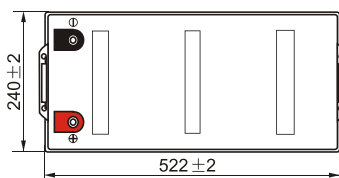
Superior Safety: Lithium Iron Phosphate chemistry eliminates the risk of explosion or combustion due to high impact, overcharging or short circuit situation.



Typical Applications

- Wheelchairs and scooters
- Solar/wind energy storage
- Back-up power for small UPS
- Golf trolleys & buggies
- Electric bikes
- Tools

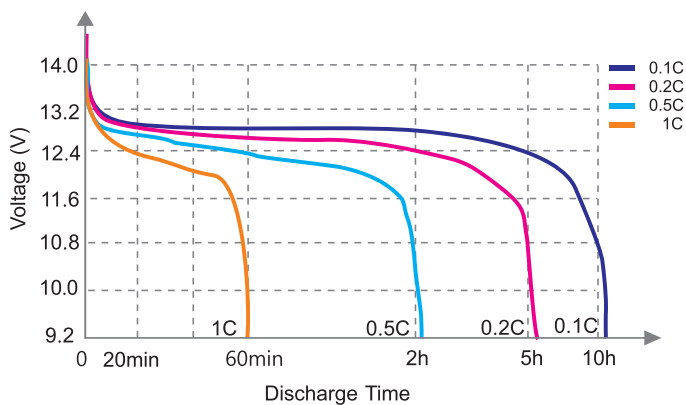
Physical Dimension-mm



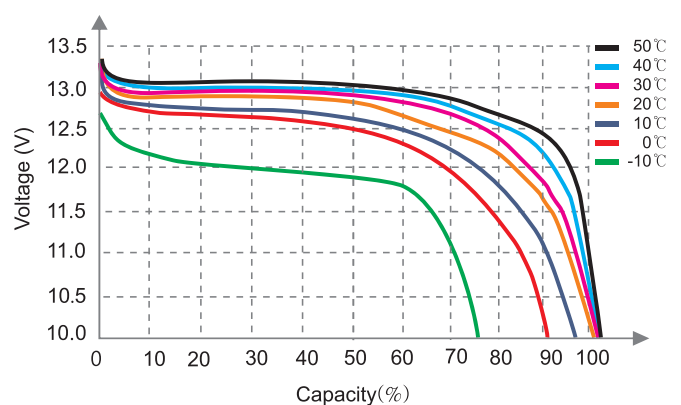
Specifications

Electrical Characteristics	Nominal Voltage	12.8V
	Nominal Capacity	200.0Ah
	Energy	2560Wh
	Internal Resistance(AC)	≤20mΩ
	Cycle Life	>2000 cycles @0.5C 100%DOD
	Months Self Discharge	<3%
	Efficiency of Charge	100% @0.5C
	Efficiency of Discharge	96~99% @0.5C
Standard Charge	Charge Voltage	14.6±0.2V
	Charge Mode	0.2C to 14.6V, then 14.6V, charge current to 0.02C (CC/CV)
	Charge Current	60.0A
	Max. Charge Current	120.0A
	Charge Cut-off Voltage	14.6V±0.2V
Standard Discharge	Rated Discharge Current	60.0A
	Max. Discharge Current	120.0A
	Discharge Cut-off Voltage	10.0V
Environmental	Charge Temperature	0°C to 55°C (32F to 131F) @60±25% Relative Humidity
	Discharge Temperature	-20°C to 60°C (-4F to 140F) @60±25% Relative Humidity
	Storage Temperature	-20°C to 40°C (-4F to 113F) @60±25% Relative Humidity
	IP Class	IP65
Mechanical	Plastic Case	ABS
	Approx. Dimensions	522mm*240mm*224mm (20.55in.*9.45in.*8.81in.)
	Approx. Weight	24.20kg (53.80lbs)
	Terminal	M8

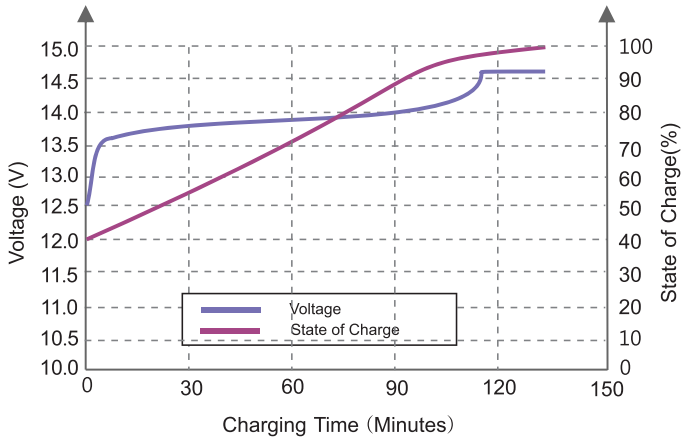
Different Rate Discharge Curve(25°C)



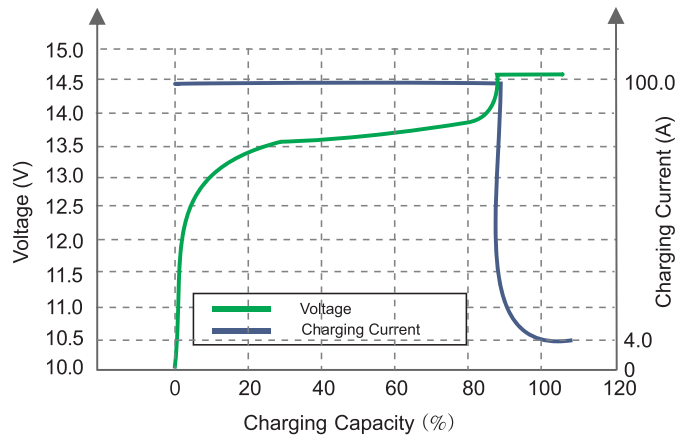
Different Temperature Discharge Curve(0.5C)



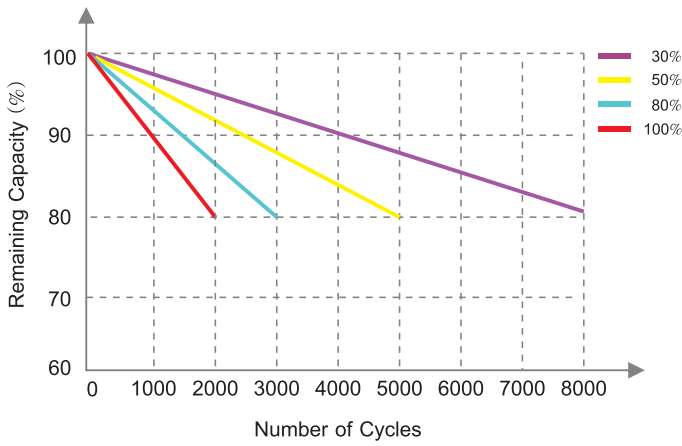
State of Charge Curve(0.5C, 25°C)



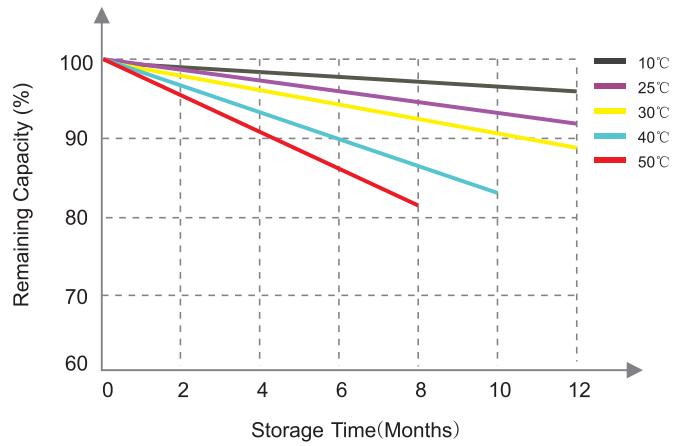
Charging Characteristics(0.5C, 25°C)



Different DOD Discharge Cycle Life Curve(1C)



Different Temperature Self Discharge Curve





Starmax Corporation

1585 Cliveden Avenue, Delta, British Columbia
V3M 6M1, Canada

Phone: +1 888 669 1310

Email: info@starmaxbatteries.com

Website: www.starmaxbatteries.com

